

auslogics
software

Disk Defrag Free Disk Defrag Pro

User Manual



Welcome to Auslogics Disk Defrag



This is your guide to one of the fastest
and most effective defragmenters in the world that lets you:



Defragment HDDs with a
super-quick engine



Optimize SSDs using a special
algorithm for this drive type



Analyze your drive's status



Schedule offline defragmentation
to process locked system files and
more

Here is a brief overview of the features that allow the program to optimize and improve your system performance:

FEATURE

DESCRIPTION

File defragmentation

Defragments files and folders by merging their pieces together

Free space consolidation

Merges scattered pieces of free space into a contiguous block, preventing fragmentation of newly created files

Smart placement of system files

Moves system files to the faster part of the disk, minimizing the time needed for hard drive to access them

Clears the MFT Reserved Zone

Moves data files from the MFT Reserved Zone into the rest of the disk space, preventing MFT fragmentation

Single file defragmentation

Can save you time by defragmenting only the files you need instead of the entire hard drive

Simultaneous defragmentation

Can defragment several drives at once, greatly reducing the time needed for defragmentation

VSS-optimized algorithm

Minimizes growth of the VSS storage area and reduces the chance of overwriting previous VSS snapshots

Auto-Defragmentation

Can defragment disks automatically in the background when your system goes idle

Scheduled defragmentation

Has a flexible scheduler that allows you to set the most suitable time span for defragmenting disks

Here is a brief overview of the features that allow the program to optimize and improve your system performance:

FEATURE**DESCRIPTION**

Clears temporary files

Can clear current user and Windows temporary folders to reduce the time needed for defragmentation

File fragments viewer

Shows you the list of all fragmented files and their fragments location on the disk

File/Folder exclusion

If there is encrypted data or other files that should not be moved, they can be excluded from defragmentation

Flexible handling of large fragments

Can be configured to ignore large file fragments as their defragmentation doesn't increase file read speed much

Supports multi-terabyte volumes

Has a powerful engine that allows the program to defragment large disks of several terabytes

Command line support

Supplied with a command line tool – «cdefrag.exe», which can be found in the program folder once it is installed

Installing Disk Defrag



Launch the installer by double-clicking on the downloaded file.

You can leave the installation options as they are or customize them on this page.



Click the links to review the EULA and Privacy Policy, then click the **'Agree and install'** button to start installation.

Installing Disk Defrag

Auslogics Disk Defrag



Installation complete

Thank you for installing Auslogics Disk Defrag,
award-winning disk optimization tool

Launch Disk Defrag

Finish

Make sure the checkbox to launch Disk Defrag is checked and click the **'Finish'** button to complete installation.

Free vs Pro

Disk Defrag comes in two versions: Free and Pro. The Free version offers essential disk defragmentation and free space consolidation functionality. The Pro version provides advanced features that let you schedule automatic defragmentation, clean up drives before defrags, optimize SSD drives and more. This table should give you an idea of what you can expect from each version.

When using the Free version, you will see all Pro features marked with the yellow **PRO** tag. This should give you a good idea of what you can get if you upgrade. The rest of this manual will talk about both Free and Pro version features in more detail.

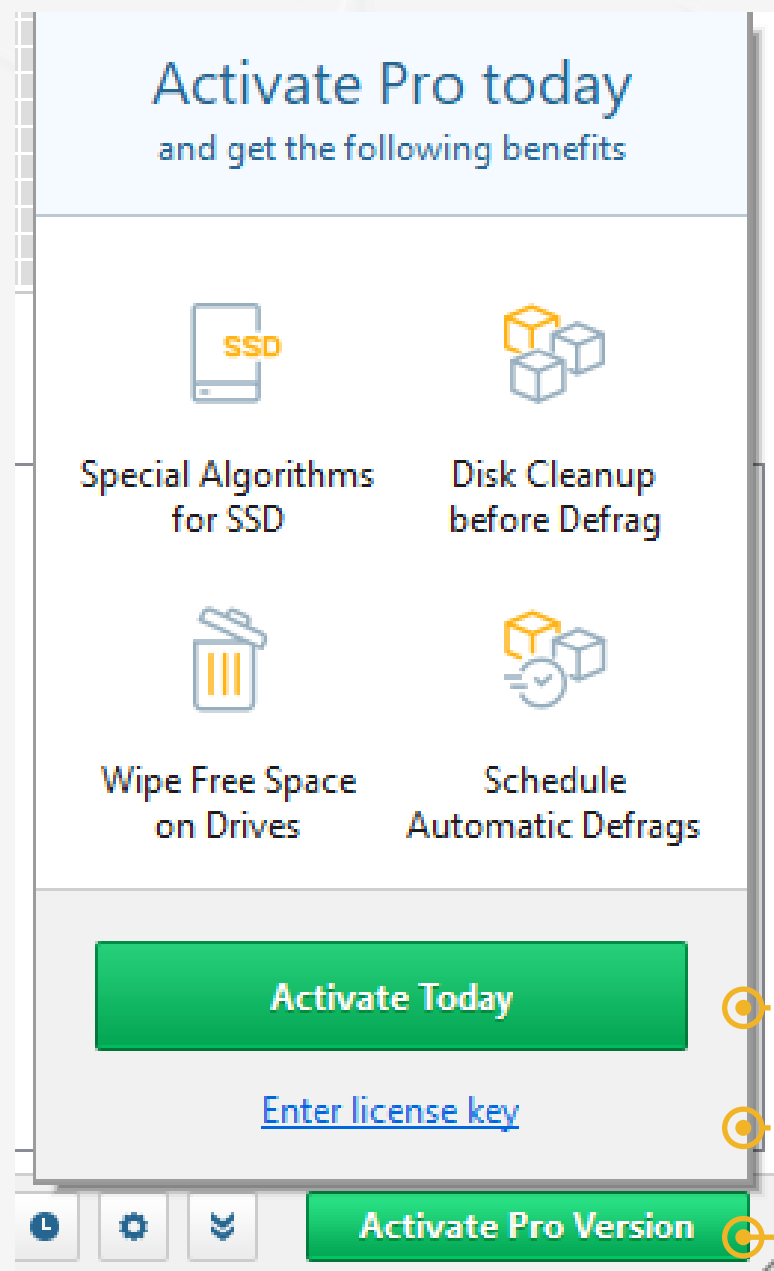
	FREE	PRO
⚙️ Special Algorithms for SSD	✗	✓
⚙️ Disk Cleanup before Defrag	✗	✓
⚙️ Wipe Free Space on Drives	✗	✓
⚙️ Schedule Automatic Defrags	✗	✓
⚙️ Ask a Question option for live expert answers	1 question	3 questions

! NOTE

Auslogics also has an even more advanced defragmenter, Disk Defrag Ultimate, which offers tools for complete HDD and SSD optimization appreciated by advanced users and IT professionals. The program was previously known as Disk Defrag Pro, but was renamed to Ultimate and should not be confused with the 2019 edition of Disk Defrag Pro.



Registering Disk Defrag Pro



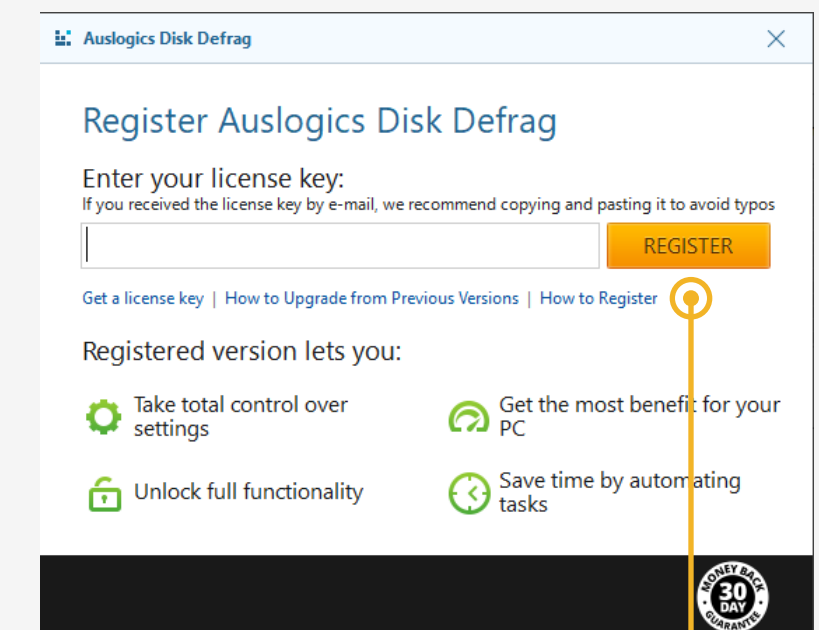
To unlock and use all of the Pro features, you need to upgrade your Disk Defrag Free to the Pro version. Here is how to do that:

- Hover your mouse over the **'Activate Pro Version'** button at the bottom-right of the program window (do not click). This will open a popup with two options for you to click. The **'Activate Today'** button takes you to a web page where you can purchase a license key. (You can also reach this page by simply clicking the 'Activate Pro Version' button without bringing up the popup)

Right below the **'Activate Today'** button in the popup, you see the **'Enter license key'** link – click it when you've already purchased a license and received a license key via email. This will bring up a small window with the field to enter your key in. Copy the license key from the confirmation email. Then, go back to Disk Defrag, paste the key into the registration field and click **'Register'**.

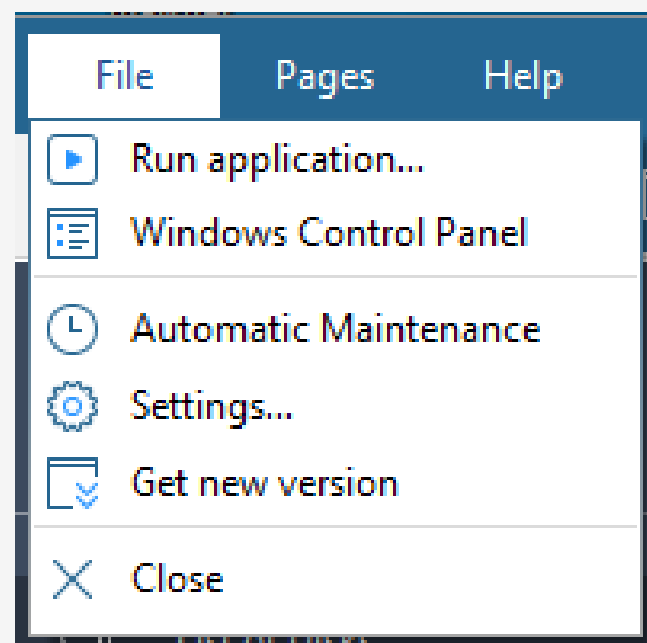
! NOTE

When you place your order online and complete payment, a confirmation message is sent to you via email to the address you provide during checkout. You will be getting two messages: one containing your invoice and the other with your license information. If you don't see the message(s), please check your spam/junk mail folder before contacting technical support. A common reason for not receiving an order confirmation is typos made in the email address, so be sure to double-check your contact info when placing order.

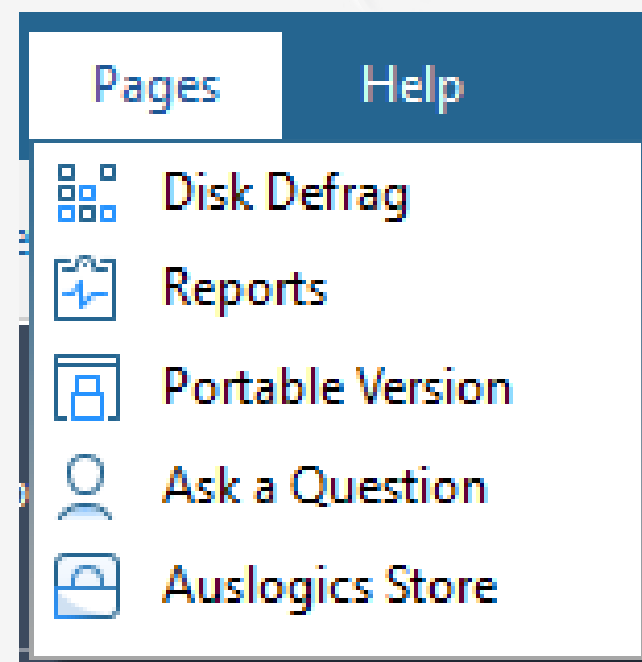


Main Menu

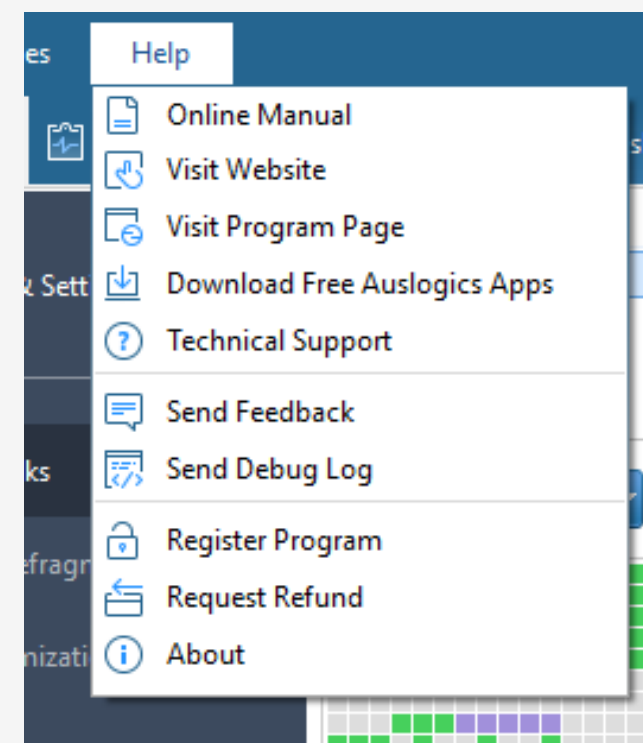
The main program menu is located at the very top of the program window and gives you three drop-down lists of shortcuts to almost every Disk Defrag feature.



The File menu contains the main options that let you quickly run any program or open a website by simply typing its name or address in a popup window; open the Control Panel, schedule maintenance, open settings or check for updates.



The Pages menu lets you quickly switch between tabs.



The Help menu lists the options you have for getting information about the program or assistance with it.

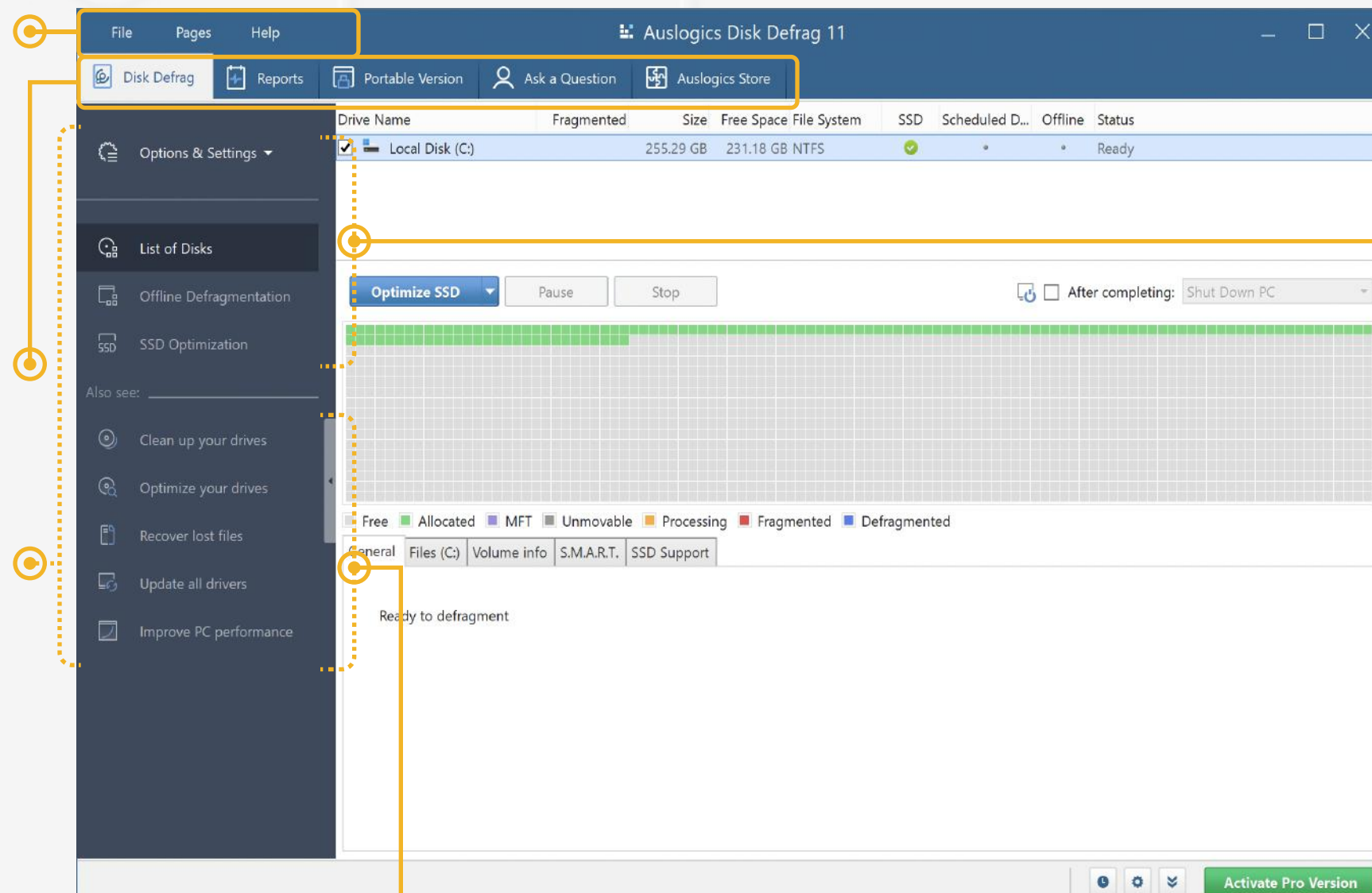
Main Window and Navigation

When you open Disk Defrag, the main program window opens on the Disk Defrag tab.

At the very top of the window, you see the **main menu** that lets you navigate through the program, easily access various features or find help info (see Main Menu section above for details).

Right below the main menu you see the **tabs** that let you switch between the program's sections. We'll be looking at each tab in more detail further in this guide.

On the left, you see the **navigation panel** that lets you go through the program's functionality and apply all of its features for maximum drive speedup.



The items you see in the main section of the navigation panel are:

Options & Settings: the main control for your defrags and optimizations (see Using Disk Defrag for details).

List of Disks, which lets you select disks to defragment or optimize, monitor defragmentation process and review results.

SSD Optimization, which offers special algorithms for processing SSD drives that help extend the drive's service life.

Offline Defragmentation, which lets you configure and schedule boot-time defrags to process locked system files before Windows starts up.

Right below, you see recommended options that link to Auslogics Store entries (see 'Auslogics Store' section further in this guide).

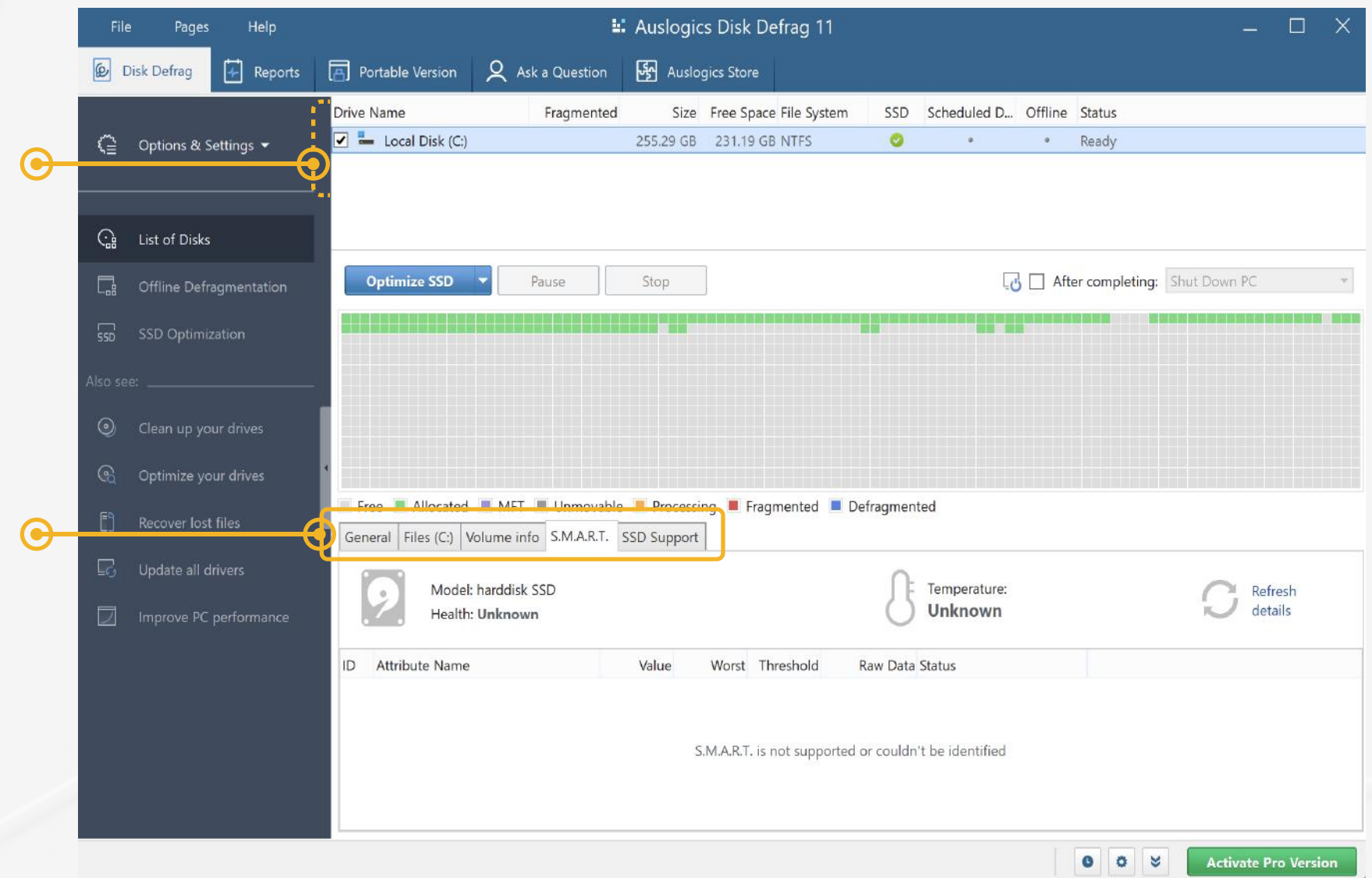
Click on the task you would like to accomplish, such as 'Clean up your drives' and get a software recommendation to help you do the job.

Using Disk Defrag

Besides defragmenting files on your drives, Disk Defrag offers various optimization options that help improve data access speed even further. To ensure maximum optimization effect, get familiar with the program's functionality before using it.

The first screen you see when you launch Disk Defrag displays the list of your drives at the top, the cluster map right below it, and details on drive status in the lower part of the window. Click on a drive to select it and have detailed information about it displayed below.

The tabs let you switch between general information, the list of files located on the drive (shown after disk analysis), technical details for the disk, its S.M.A.R.T. status (including disk temperature) and SSD support information (shown if the selected drive is an SSD). The cluster map provides a clear picture of the fragmentation on the selected disk.



Using Disk Defrag Analyze Drives

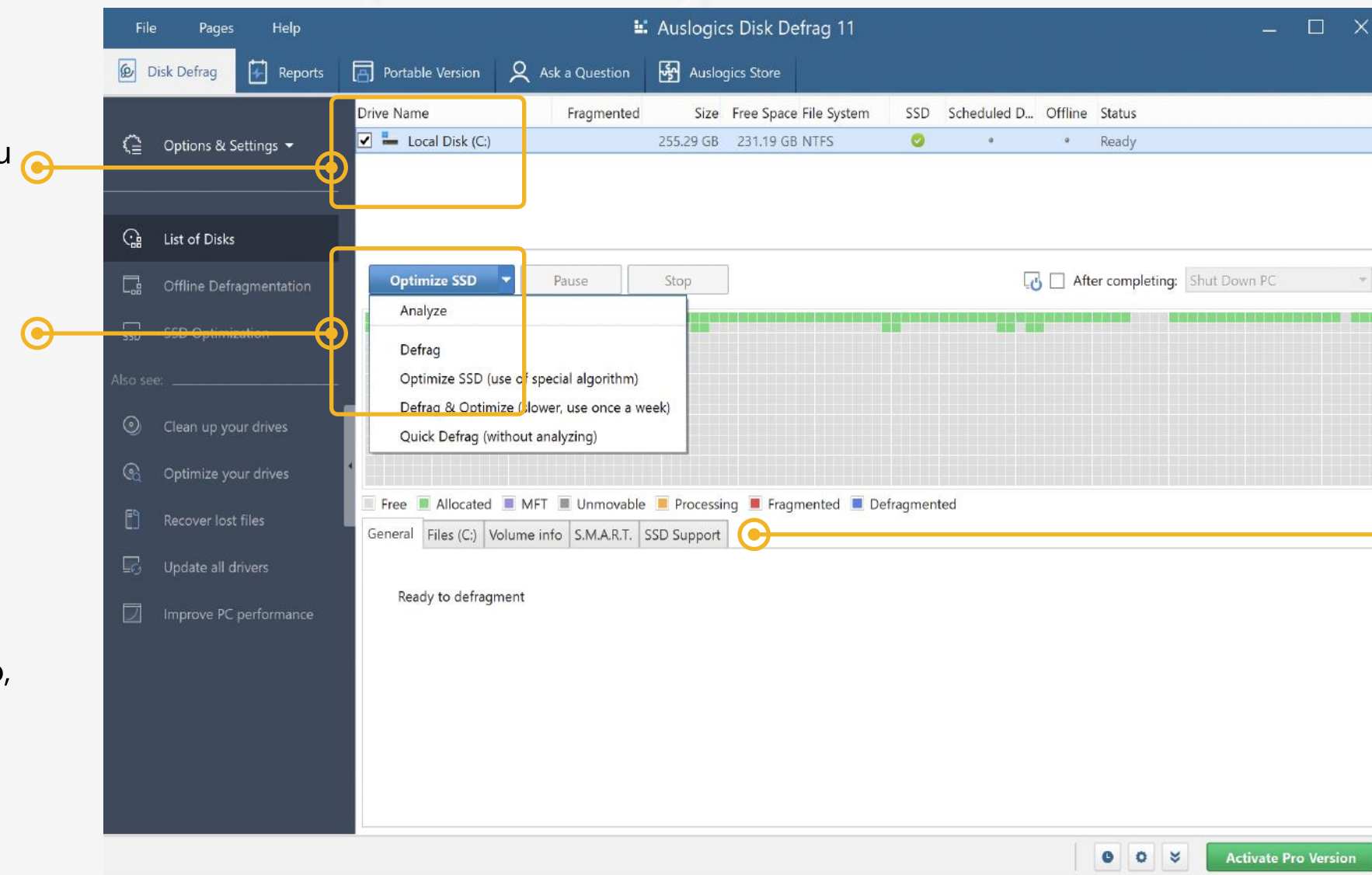
Before you launch defragmentation or optimization, disk analysis is recommended. It reads disk information and shows you a true picture of the disk's condition and recommended actions.

To perform disk analysis, follow these steps:

1. In the list of disks, select the disk you would like to analyze by checking the box next to its name.

2. Click on the arrow on the 'Defrag' button below the list and select 'Analyze' from the drop-down menu. Note that if your drive is an SSD, you will see 'Optimize SSD' instead of 'Defrag' on the button. While the operation is underway, its current status is shown below the cluster map, as well as in the disks list next to the name of the disk being analyzed.

3. Upon completion, analysis results will be displayed below the cluster map.



You can switch to the **Files** tab to view a list of fragmented files and, if desired, select the files you want to defragment individually.



When you select a file from the list, the location of its fragments will be highlighted on the cluster map. Clicking on a block on the cluster map will produce an additional tab – 'Selected Files' – which will let you view a list of files in the block that you selected on the map.

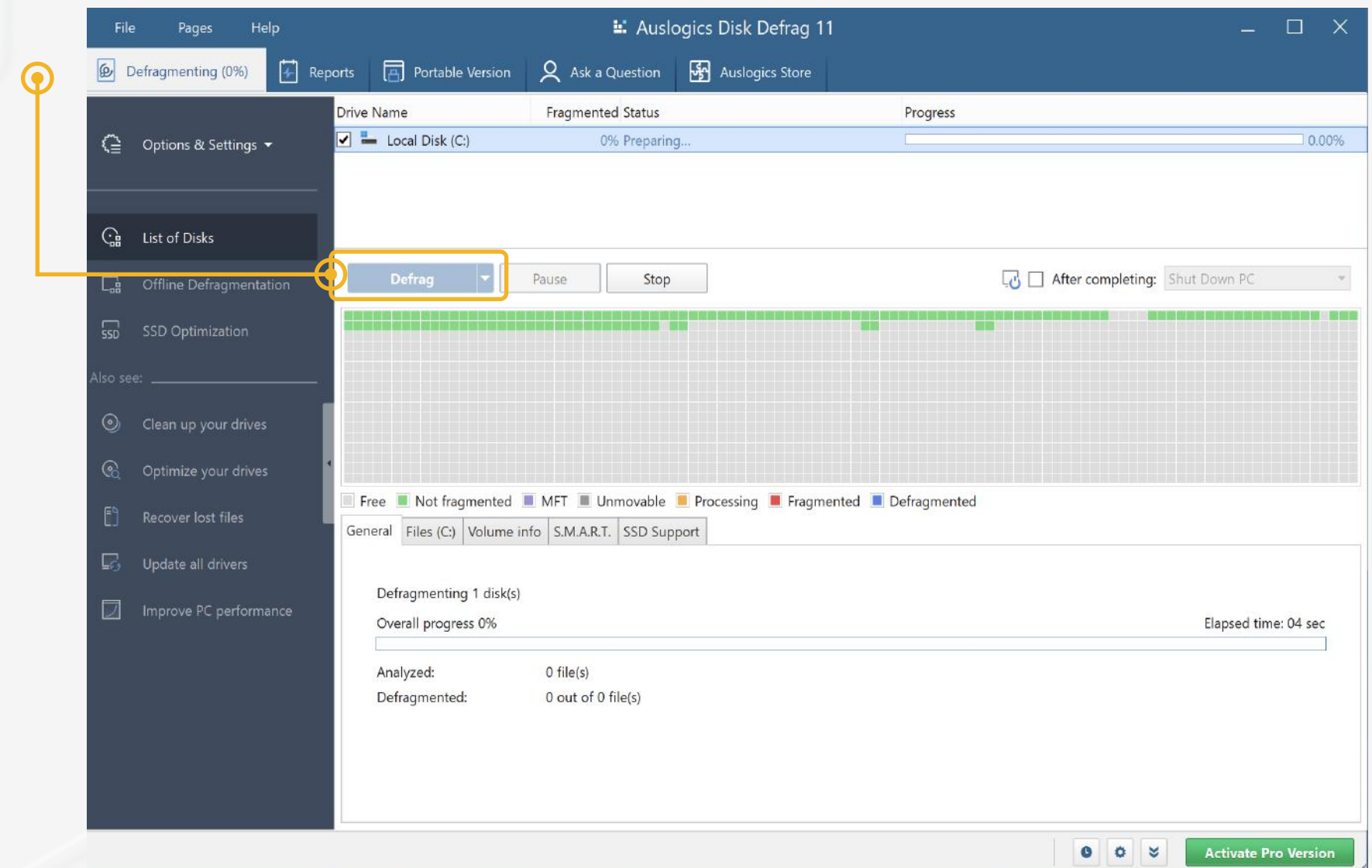
Using Disk Defrag Defragment Drives

When you are ready to start defragmenting, follow these steps:

1. In the list of disks, select the disk you would like to defragment by checking the box next to its name and click the **'Defrag'** button below the disks list. If the disk is an SSD, the button will read **'Optimize SSD'**, which means the software will use a special algorithm for processing this disk.

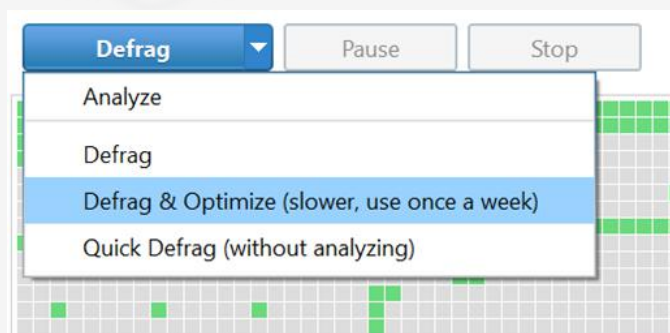
While the operation is underway, its current status is shown in the main pane, as well as in the disks list next to the name of the disk being defragmented.

2. Upon completion, defragmentation results will be displayed below the cluster map with a brief description of the result shown in the list of disks.



Using Disk Defrag Optimize Drives

Unlike simple defragmentation, «**Defrag & Optimize**» mode applies several optimization techniques:



Free Space Consolidation

Free space on a disk is often split into many small gaps between files. Windows fills these gaps with newly created or extended files. The more fragmented the free space is, the more fragmented new files will be. Disk Defrag merges free space into a large contiguous block during optimization. This technology effectively prevents further file fragmentation and increases file write speed.

System Files Smart Placement

System files are necessary for the operating system to perform its numerous functions. Commonly used by Windows, system files may be scattered all over the disk and intermixed with regular data files. Disk Defrag moves them to the faster part of the disk. Such intelligent way of defragmentation minimizes time needed for HDD to access system files and thus improves overall computer performance.

! NOTE

This feature is disabled by default. You can enable it under the 'Disk Defrag: Algorithm' tab in program settings.

Clearing the MFT Reserved Zone

Normally, the NTFS file system reserves about 12.5% of the disk volume for the MFT records (a place where information about every file and directory is stored). However, when the rest of the disk space is getting low, the MFT Reserved Zone will be used for storing regular files. This may lead to MFT fragmentation. Disk Defrag moves regular files from the MFT Reserved Zone into the rest of the disk space, allowing NTFS to allocate contiguous space for the MFT records and thus to prevent its fragmentation.

To Perform Disk Optimization, Follow these Steps:

1. In the list of disks, select the disk you would like to optimize by checking the box next to its name.
2. Click on the arrow on the '**Defrag**' button and select '**Defrag & Optimize**' from the drop-down menu.

This will launch optimization. While the operation is underway, its current status is shown in the main pane, as well as in the disks list next to the name of the disk being optimized.

! NOTE

Alternatively, you can launch operations on selected drives by clicking the 'Options & Settings' link on the left-side navigation panel and choosing what you would like to do with the drive(s) from the drop-down list of options.

Using Disk Defrag

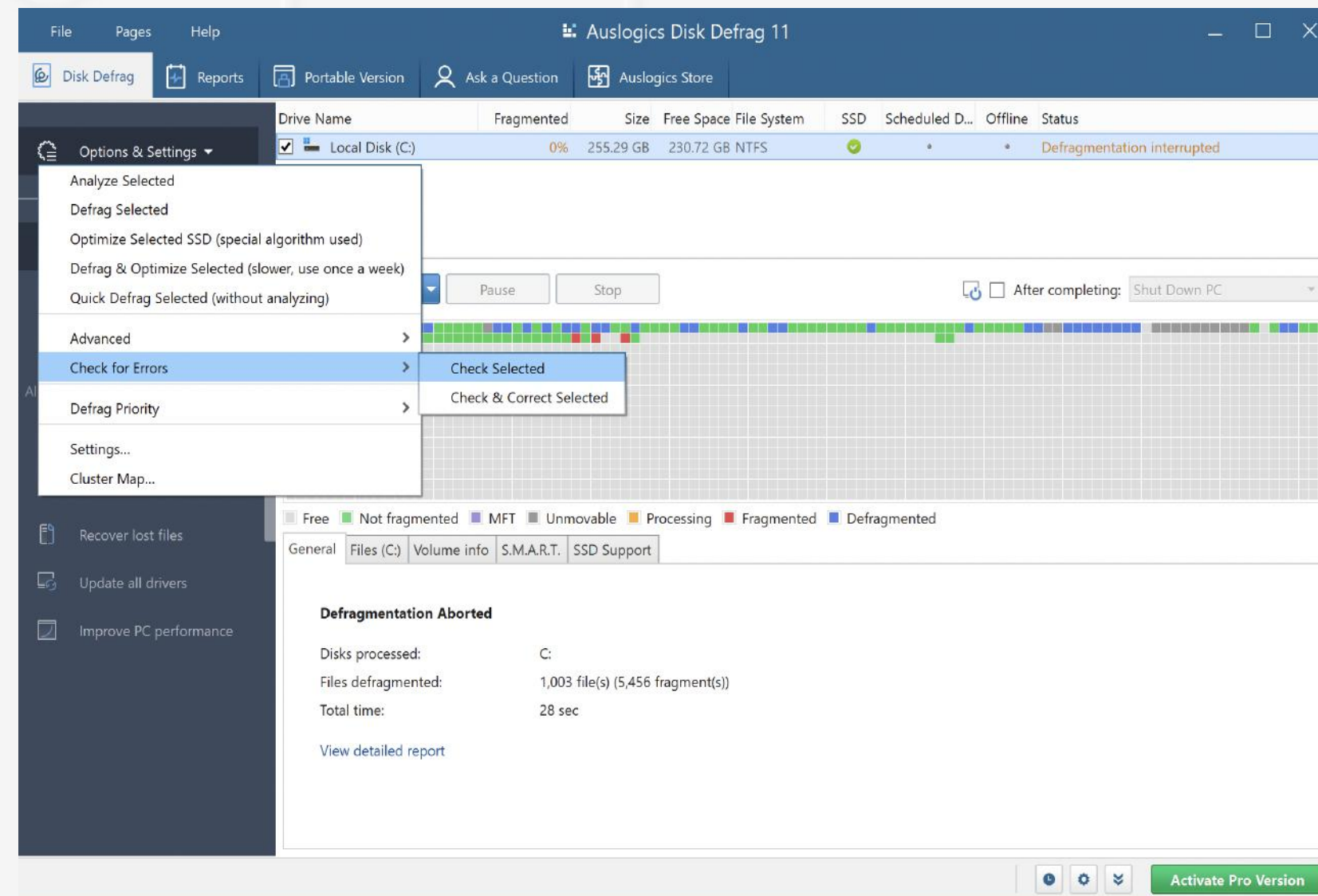
Check Disks for Errors

Before you launch defragmentation, it is a good idea to check your disks for errors.

Whenever a disk has errors, there is a risk that data may get corrupted during defragmentation. By checking for errors and fixing any errors that are found, you ensure that no data will get lost or corrupted when you launch defragmentation.

NOTE

You can use the 'Options & Settings' link on the left-side panel to perform other operations on your disks and to adjust program settings.



To check a disk for errors, follow these steps:

1. In the list of disks, select the disk you would like to scan for errors by checking the box next to its name.
2. Click on the 'Options & Settings' link on the left-side navigation panel and choose the 'Check for errors -> Check Selected' option. This will launch the standard Windows disk check tool, Chkdsk (Chkdsk.exe)
3. If errors were found during the check, you should try fixing them before you proceed to defragment the disk. To do this, click on the 'Options & Settings' link on the left-side navigation panel and choose 'Check for errors -> Check & Correct Selected'.

Reports

Using the **'Reports'** tab in Disk Defrag, you can review your current resource consumption and manage operation reports.

On the left side of the screen you can monitor **current resource use statistics**. This provides a great overview of how your system is handling all the tasks and applications that are currently running on it. If you see extremely high CPU, disk, network or memory loads, you will know that something might be wrong and will be able to take action.

File Pages Help Auslogics Disk Defrag 11

Disk Defrag Reports Portable Version Ask a Question Auslogics Store

Here you will find current system resource load charts and can view reports on all operations.

CPU (2%) Detailed view 100%

Disks (340 KBps) 665 MBps

Network (54 Bps) 10 MBps

Memory (67%) 100%

Optimize Drivers Create System Report

Tool Reports
You can view all reports on all operations, or just reports for a specific time period for a selected tool.

All

Name	Tool	Date
Report	Disk Defrag	10/14/2022

View Report Delete Reports

Activate Pro Version

On the right side you see a **table that lists reports** created after every operation. You see the report name, the name of the tool that created it and the date when the operation ran. The **filter** above the table lets you search for specific reports by creation time.

Click on a report in the table to select it, then click the **'View report'** button below the table to view it. Use the **'Delete'** button to delete all reports ever created or just the reports listed above (the ones that match your search filter): you can select the option you want from the drop-down menu that opens when you click on the **'Delete'** button arrow.

Auslogics Store

The 'Auslogics Store' tab lists software programs made by Auslogics or its partners and recommended for your PC.

This is also where you can see special deals and discounts available to you. You can click a button to go straight to an online cart and purchase software using your exclusive discount.

To install and try a recommended program, click the 'Buy now' button next to it. This will open a window with a brief summary of what the software can do for your PC, and a link to download and install it.

Once a recommended program has been installed, it will show as installed and will have a 'Run' button and a 'See status' link next to it.

The screenshot shows the 'Auslogics Store' tab within the 'Auslogics Disk Defrag 11' application. The store is titled 'Recommended by Auslogics for your PC' and lists several software programs with their descriptions, prices, and 'Buy now' buttons. The programs listed are:

Program Name	Description	Price	Discount	Action
FILEWHOPPER	Send big files and folders without compression. Simple, secure, encrypted. Your first 5GB is free.			Try now
BoostSpeed 12	Clean, tweak and turbo-charge your computer today	\$47.96	20% off (\$59.95)	Buy now
Driver Updater	The best solution for keeping your hardware and devices working sm...	\$31.96	20% off (\$39.95)	Buy now
Anti-Malware	Top-notch protection against malware and data safety threats.	\$23.96	20% off (\$29.95)	Buy now
Disk Defrag Ultimate	Auslogics Disk Defrag Ultimate is the perfect tool to get your drives ...	\$23.96	20% off (\$29.95)	Buy now
Disk Defrag	Choice of millions of users worldwide!	\$23.96	20% off (\$29.95)	Buy now
Registry Cleaner	Safe and easy way to restore stability	\$23.96	20% off (\$29.95)	Buy now
Video Grabber	Download, convert and save any video from the web	\$31.96	20% off (\$39.95)	Buy now
Windows Slimmer	A quick way to make your Windows smaller	\$23.96	20% off (\$29.95)	Buy now

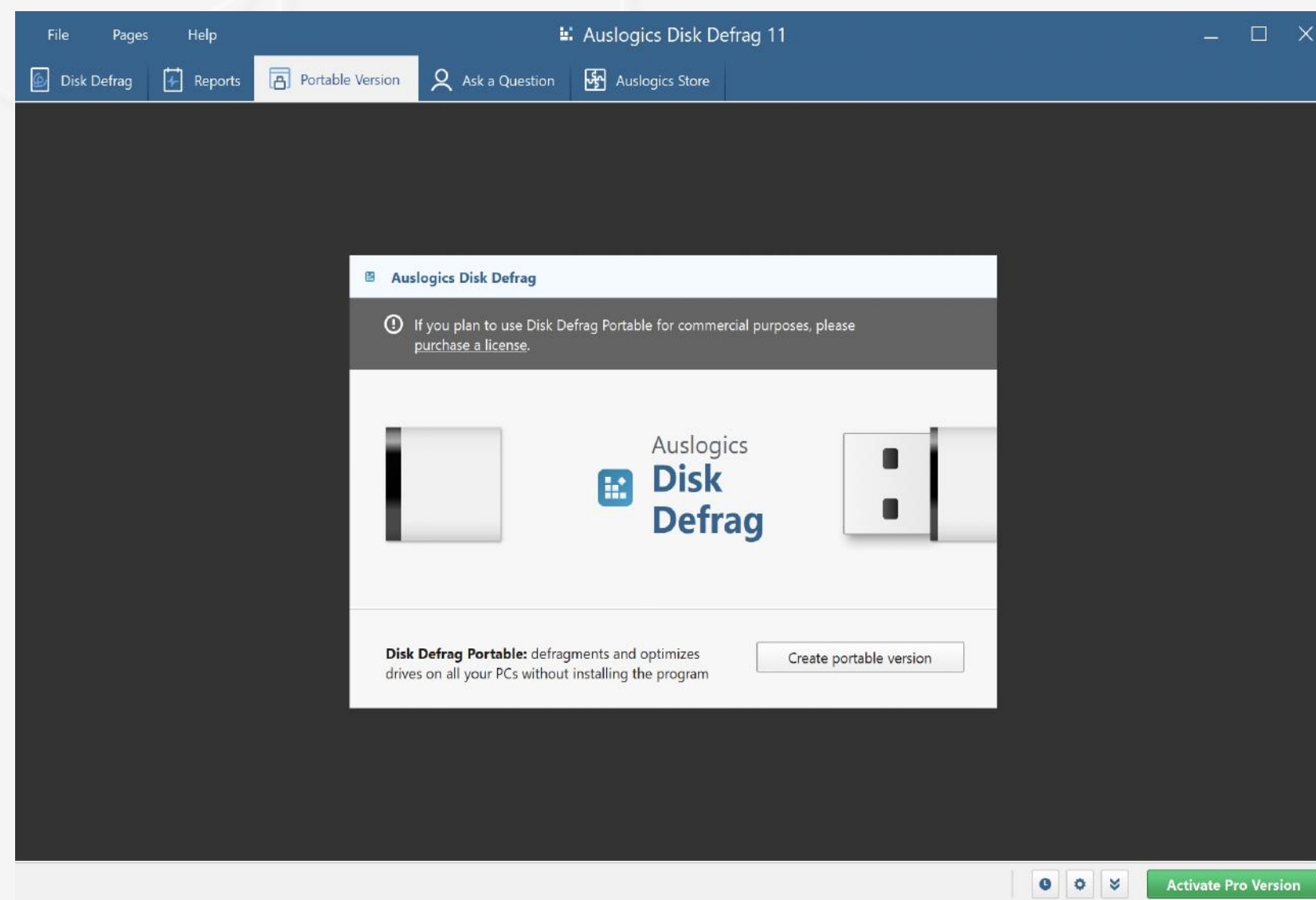
NOTE

These programs may offer a trial or a free version, but require a license to be purchased for full functionality. Installing or using any of them is completely optional.

Portable version

Defragment and optimize drives on all your computers without installing the program.

Portable software is software that runs from a removable storage device, such as a USB flash drive. It does not need to be installed on the computer to run and does not store data on your system. Instead, you can have all your settings and files related to this software stored on the removable drive. Portable software is lightweight and allows you to easily move the application between computers.



To create a portable version of Disk Defrag, click on the '**Create portable version**' button and let the program save the files on your PC. Once Disk Defrag Portable is created, you can locate it by clicking the '**Open folder**' button. Move the file to a USB drive or any other removable storage device and use Disk Defrag on any PC you want defragmented.

Ask a Question

The **'Ask a question'** tool lets you ask online experts your questions related to using Auslogics software or to getting your PC optimized. You can also browse through other questions and answers there and see if what you need has already been posted before.

To use the feature, you need to get registered by providing your email address and a display name. To do that, click on the **'Sign up'** button. Click the link, then enter your name or a nickname you'd like to be identified by on forum pages, and hit the **'Register'** button.

Once you click the 'Register' button, go to your Inbox at the address you specified in the form and look for a confirmation message with your automatically generated password. You will need to use that password to log in when you go to ask your question. Return to Disk Defrag and click the **'Sign in'** button to continue.

The screenshot displays the 'Ask a Question' interface within the Auslogics Disk Defrag 11 application. The interface is organized into several sections:

- Header:** 'File', 'Pages', 'Help', and 'Ask a Question' (highlighted).
- Information:** 'All features related to program technical support'.
- Ask a Question Section:**
 - Icon of a person with a question mark.
 - Ask a Question** (New badge)
 - Get professional answers here**
 - Text: 'Auslogics proudly presents a new unique feature: a way for you to directly contact our computer experts. If you have any questions regarding Windows, PC, installed software or devices, ask our experts and receive a comprehensive answer.'
 - Choose a question category:** Windows questions, Software questions, Device questions.
 - Having problems with Auslogics software?** Ask your question as many times as you need: it's always free.
- User Interaction:**
 - 'Hello, guest!'
 - '1 free questions left'
 - 'Sign in or sign up to continue'
 - 'Sign In' button
 - 'Sign Up' button
 - 'Reset password' link
 - 'Service terms' link
- Product Promotion:** 'Auslogics Disk Defrag (version 11.x)' with 'BASIC FREE VERSION' label and 'Upgrade to Pro' button.
- Latest Questions:** A list of recent questions with dates, titles, and 'Read Now' links.
- Footer:** 'Need help?' section with links to 'How to register', 'How to upgrade from previous version', 'How to uninstall', and 'View user manual'. An 'Activate Pro Version' button is also present.

Ask a Question

Ask a Question - New Question
Creating...

Category: Windows questions
Subcategory: Home Network Issues
Message subject: Enter subject...

Write your question...

Add file: [file input]

Data sent will also include information about your system to help assess the situation. By checking the box you confirm that you have read and agreed to the [Terms of Service](#).

Send Cancel

Once logged in, click on a category name for your question, which will open a form that will let you fill in your question details. Select the subcategory for your question topic, type in a descriptive subject and write your question in the big blank field. You can also use the **'Add file'** option to add screenshots or other files to provide more information on the issue you are having. When done, click the **'Send'** button. Your question will be reviewed and posted on the web forum, and you will be able to log in and view answers to your question there.

To access the forum, click the **'My account'** button or use the link that was emailed to you with your password. In the lower part of this screen, you see links to the most common help topics. On the right, find the latest questions posted by users through the Ask a Question tool. Clicking on the **'Read now'** link will take you to the question on the Auslogics forum, where you can read the answers and browse other questions.

Auslogics Disk Defrag 11

Ask a Question

Get professional answers here
Auslogics proudly presents a new unique feature: a way for you to directly contact our computer experts.
If you have any questions regarding Windows, PC, installed software or devices, ask our experts and receive a comprehensive answer.

Choose a question category:

- Windows questions
- Software questions
- Device questions

Having problems with Auslogics software?
Ask your question as many times as you need: it's always free.

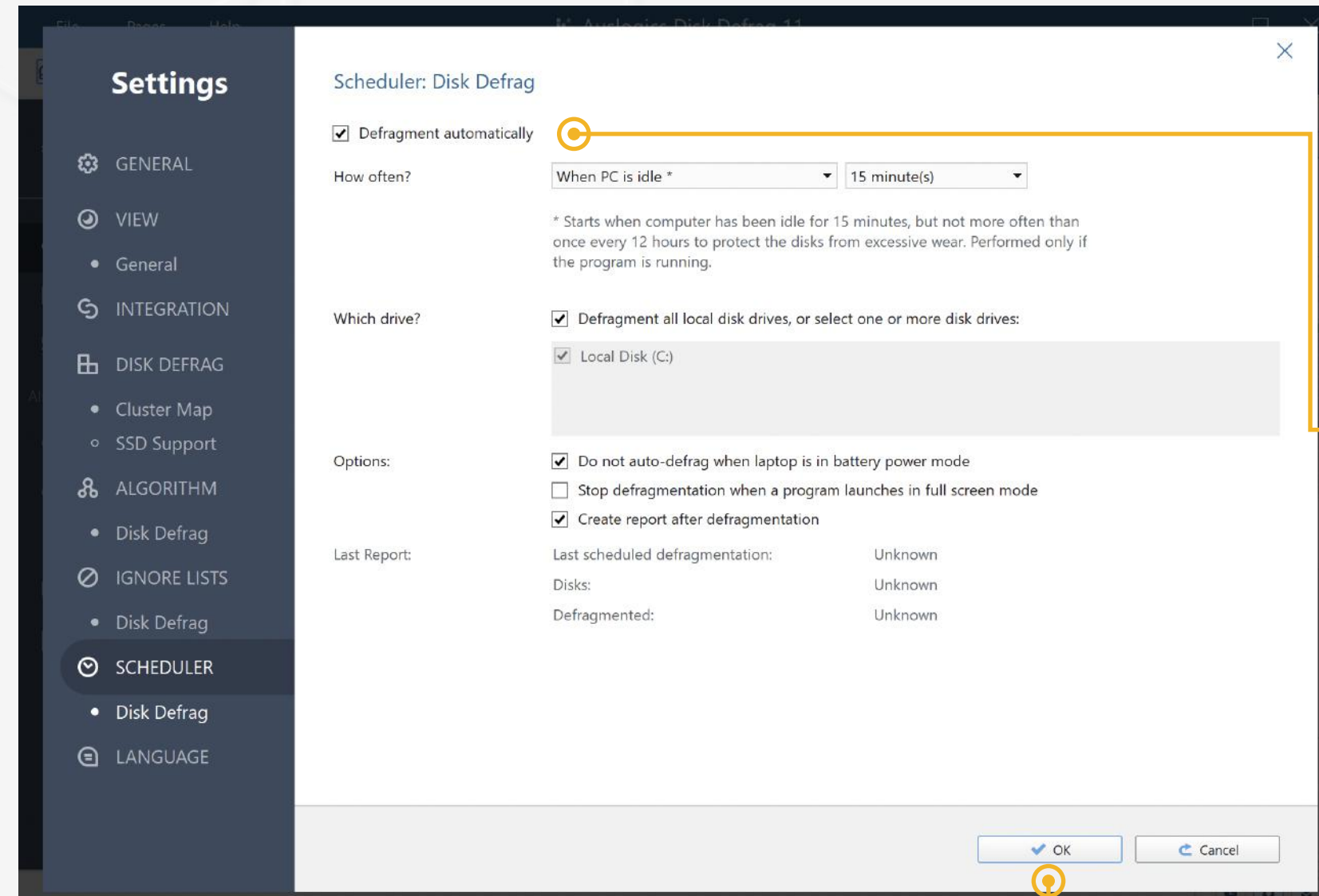
Latest Questions

- 10/12/2022: **no sound/no f6 light for no sound**
hard disk crash...reloaded win10 not from backup
reload drivers multiple time
computer works
no sound
hp pavilion/i7gen10/b8to sound/mvidia Read Now
- 10/11/2022: **come fare pubblicità nella sezione servizi**
Come abolire o disabilitare i servizi poco utili? C'è un sistema in automatico? Grazie. Read Now
- 10/2/2022: **win 11 login issue**
my laptop was set up with a email the i had to stop using because it was hacked, now when i try to log in the first login that is i see located in the center of the screen, that is... Read Now
- 10/1/2022: **Voice recognition does not work**

Need help?
See these useful links: [How to register](#) [How to upgrade from previous version](#) [How to uninstall](#) [View user manual](#)

Scheduling Defragmentation

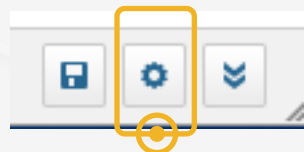
Running defragmentation regularly helps support consistent PC speed. Disk Defrag comes equipped with a **Scheduler** that provides an array of options you can configure for automatic defrags: set up **defragmentation by time** (runs exactly at the specified time, regardless of whether the program is running), or set Disk Defrag to run **when your PC is in idle state** (runs only when the program is running). Idle time defrag stops when user activity on PC is resumed.



To configure scheduled defragmentation, please follow these steps:

1. Click on the clock icon at the bottom-right of the main program window.
2. In the window that pops up check the **'Defragment automatically'** box.
3. Specify when you want defragmentation to be launched.
4. Select the disks that you want to enable the scheduler for by checking the boxes next to the disk names.
5. You can also set the program not to launch defragmentation when your PC is in battery power mode by checking the appropriate box.
6. Click **'OK'** when done.

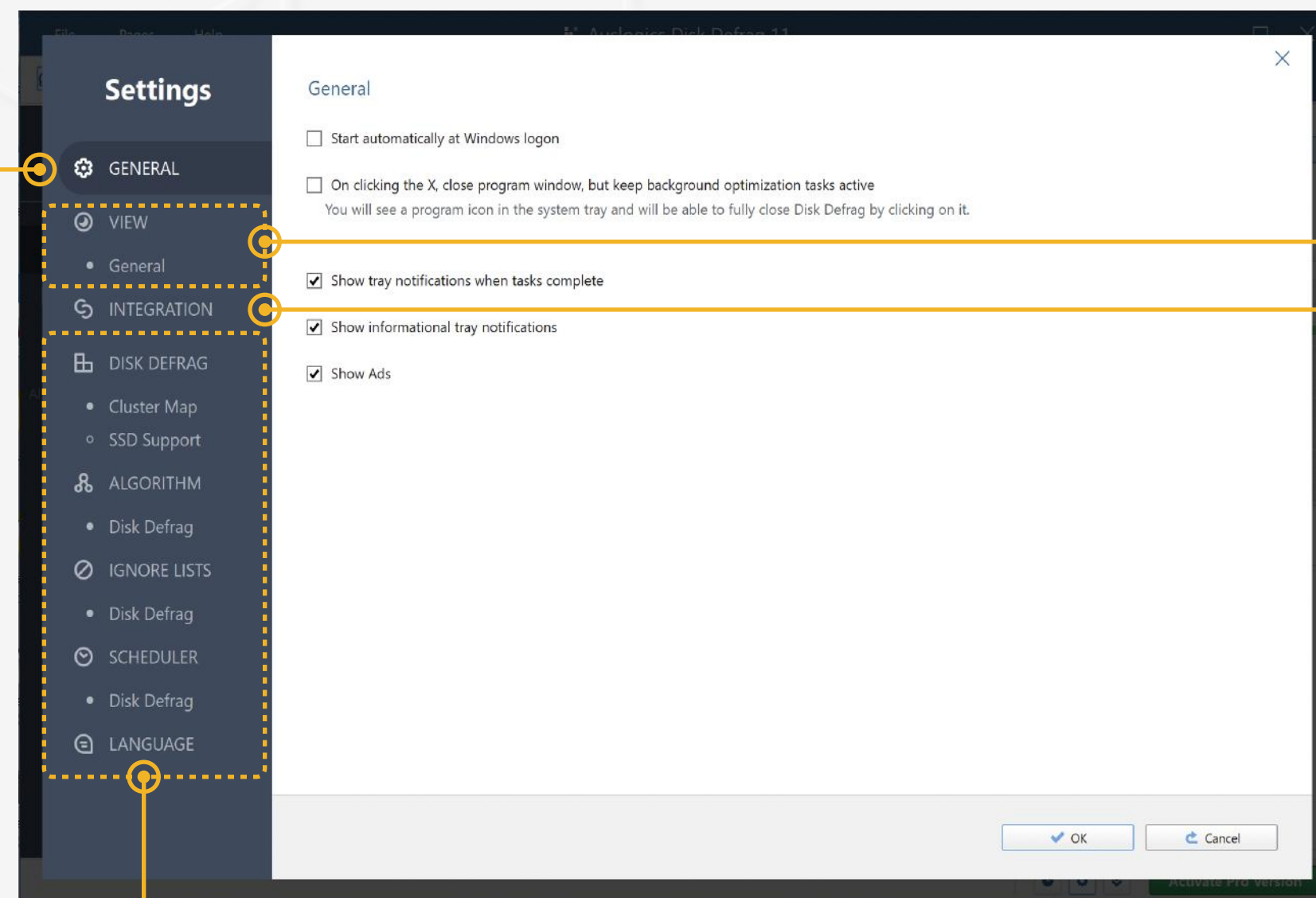
Customizing Program Settings



The Settings manager allows you to change the program's appearance and behavior, tweak algorithms and set exclusions.

To access Disk Defrag settings, click on the gear icon at the bottom-right of the main program window. A new window will appear, with its own navigation pane on the left. Click through the options on the navigation panel and adjust the settings to satisfy your needs:

Under **General**, you can specify the program's behavior (whether you want it to start at Windows logon, or be minimized on close, etc.).



Under **View**, select the size of interface elements and temperature display units.

Under **Integration**, you can have Disk Defrag added to context menu for faster defrags or have it set as your default defragmenter.

Further down, you can customize cluster map appearance, fine-tune program algorithm, adjust SSD drive support options and specify exclusions, if needed.

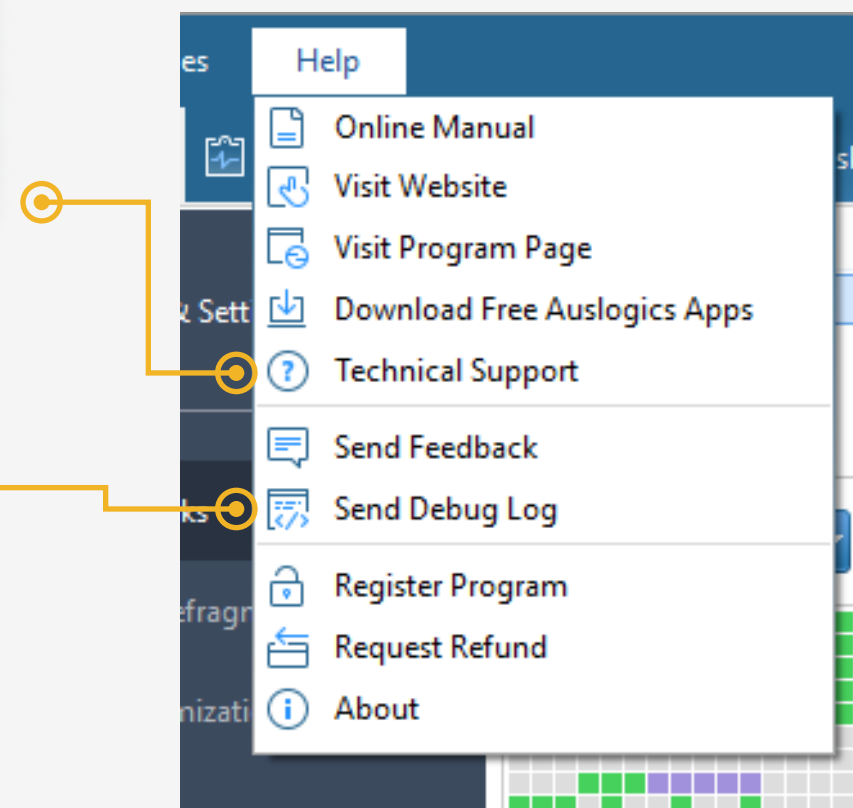
When done, click '**OK**' to exit and apply all changes.

Contacting Auslogics

There are a number of ways to contact Auslogics, including several you can reach right from Disk Defrag's Help menu.

Click on **'Help'** in the main menu, then select **'Technical Support'** to go to the contact form on auslogics.com and send us a message.

If you experience technical issues with the program, you can click on **'Send debug log'** to help our team get to the root of the problem.



Many of the questions you may have regarding Auslogics products have already been answered in the FAQ section on www.auslogics.com.

The Support section on the Auslogics website also offers a way to retrieve a lost license key, request a refund, download product manuals and more.

Should you have any questions that are not answered on the website, don't hesitate to email our dedicated customer support team 24/7 at the following address:
support@auslogics.com.

**Thank You
for Using Auslogics Software!**

auslogics
software