

Quick Guide to File Recovery

auslogics
software



Welcome to Auslogics

File Recovery

This is your guide to one of the best and most reliable file recovery tools in the world that lets you:



Search

Your drives and specify file type, when last modified or just by file name to quickly recover deleted files



Wipe

Your hard drive clean, only affecting deleted files and making them unrecoverable



Shred

Your files securely so they can not be recovered by others

Installing File Recovery

Auslogics File Recovery

 English (United States) ▼



Welcome to File Recovery

Next generation of PC maintenance

Installation directory:

C:\Program Files (x86)\Auslogics\File Recovery ...

- Create a desktop icon
- Launch program at Windows startup
- Send anonymus info to help improve our service

By installing this application you confirm that you have read, understood and fully accepted the [Licence Agreement](#) and [Privacy Policy](#)

Agree and install

- 1 Launch the installer by double-clicking on the downloaded file.
- 2 You can leave the installation options as they are or customize them on this page.
- 3 Click the links to review the EULA and Privacy Policy, then click the 'Agree and install' button to start installation.

Installing **File Recovery**

Auslogics File Recovery



Installation Complete

Thank you for installing Auslogics File Recovery

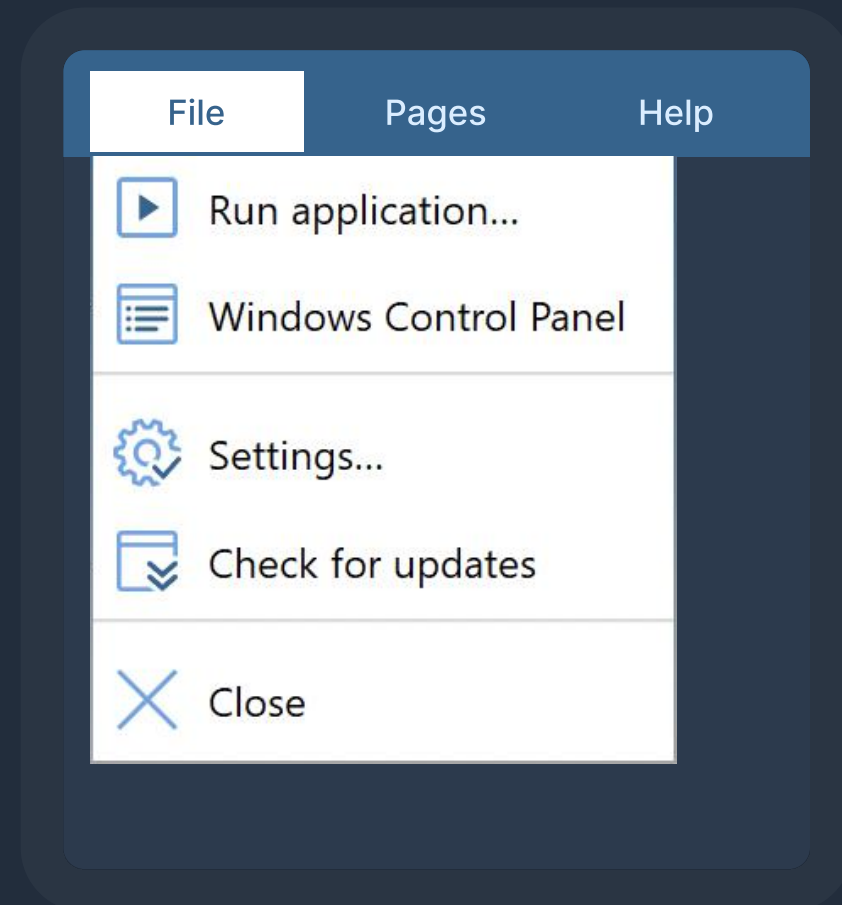
Launch File Recovery

Finish

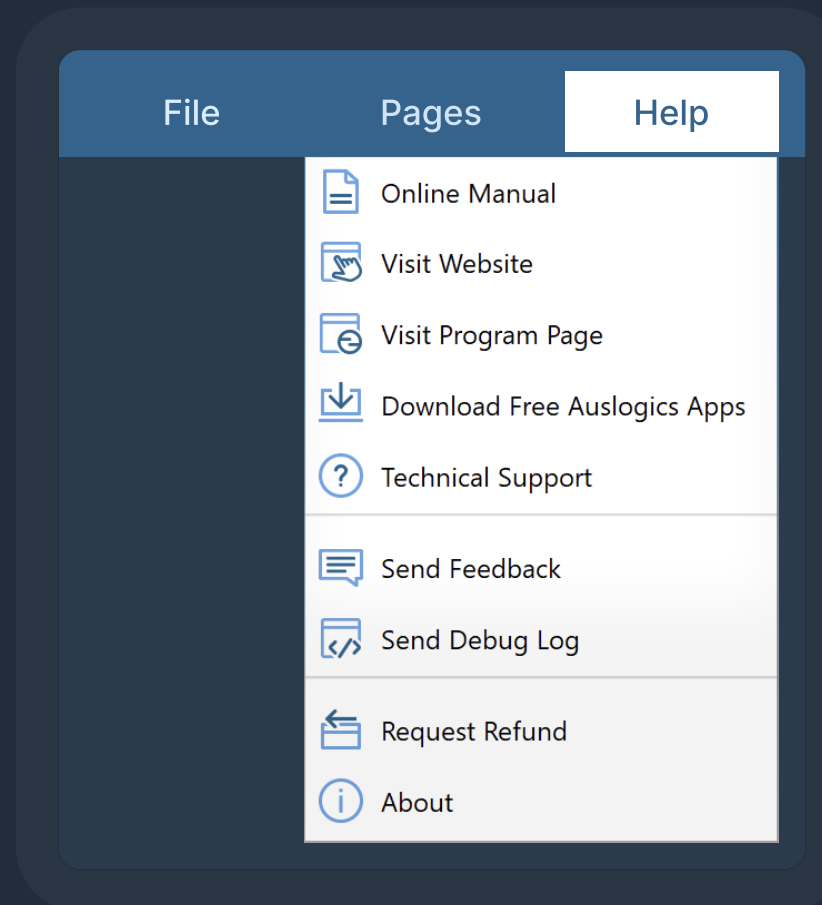
Make sure the checkbox to launch File Recovery is checked and **click the 'Finish' button** to complete installation.

main menu

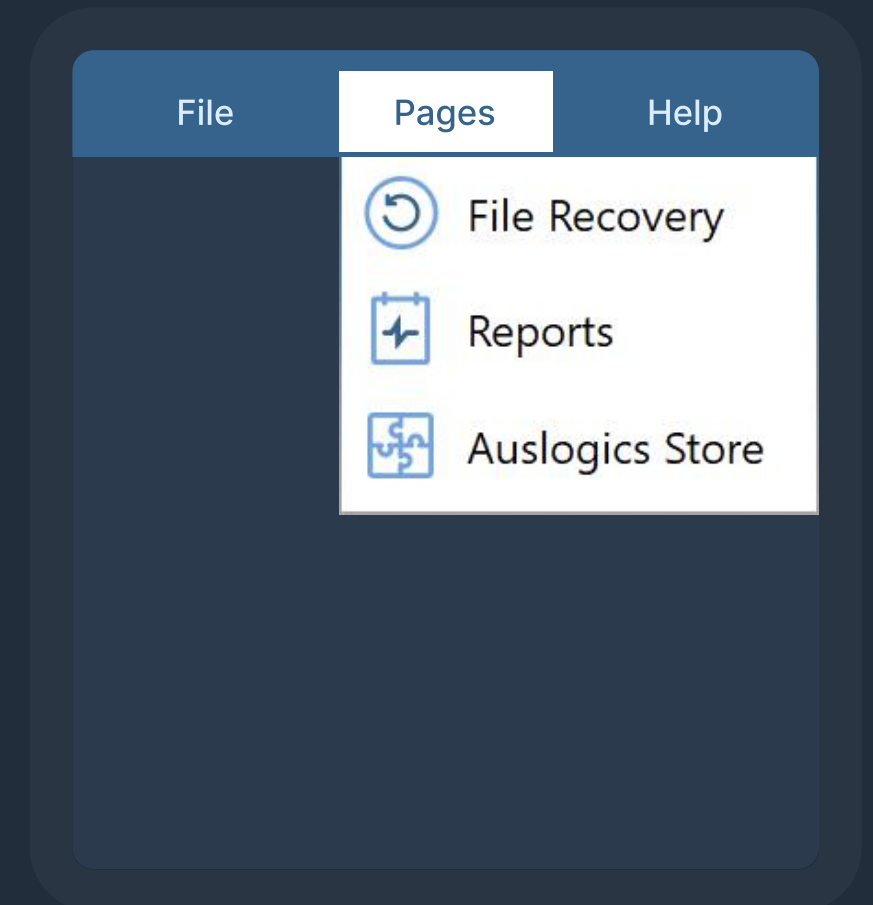
The main menu is located at the very top of the program window and gives you three drop-down lists of shortcuts to almost every File Recovery feature.



The File menu contains the main options that let you quickly run any program or open a website by simply typing its name or address in a popup window; open the Control Panel, open settings or check for updates.



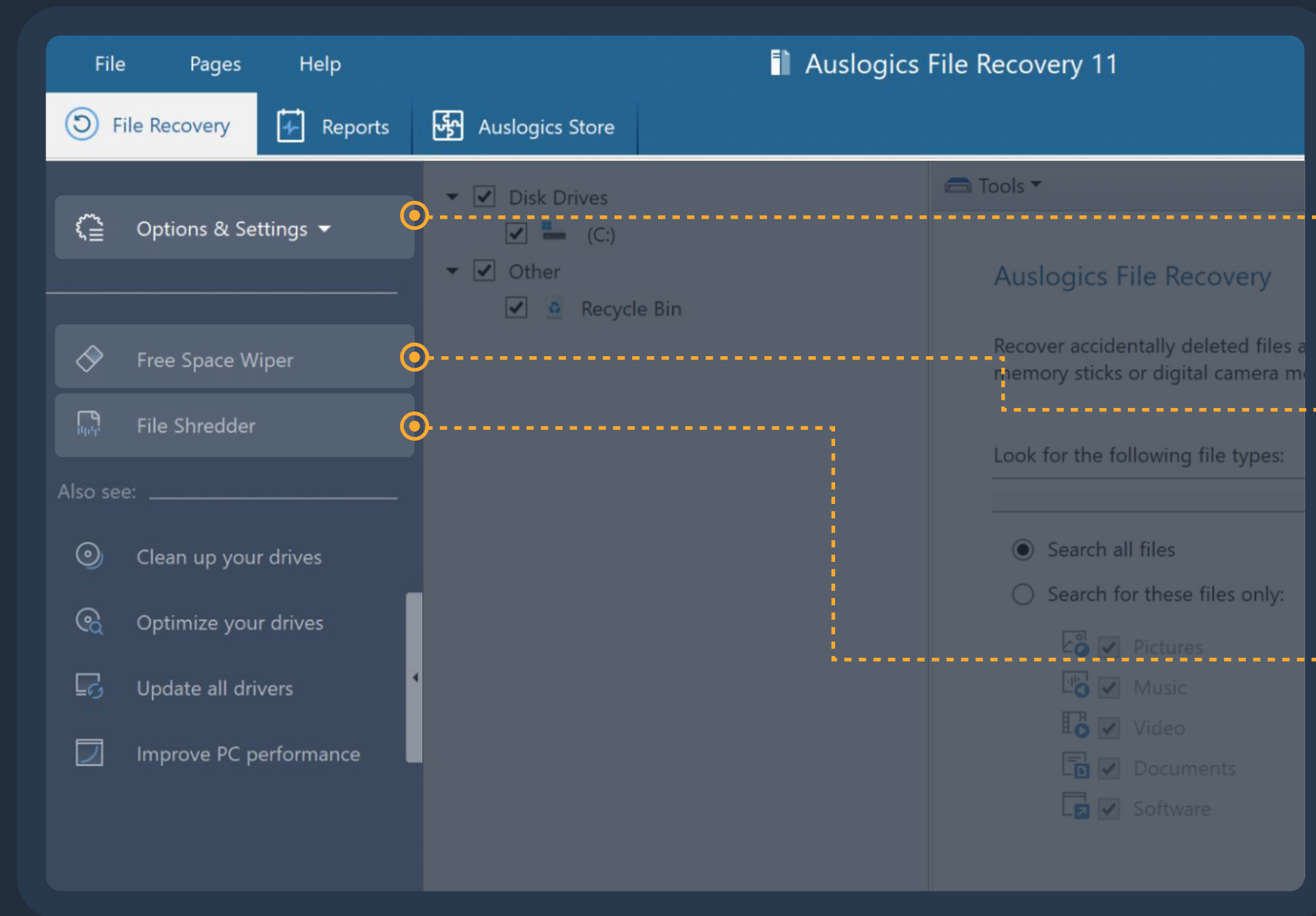
The Help menu lists the options you have for getting information about the program or assistance with it.



The Pages menu lets you quickly switch between tabs.

Main Window and Navigation

When you open File Recovery, the main program window opens on the File Recovery tab.



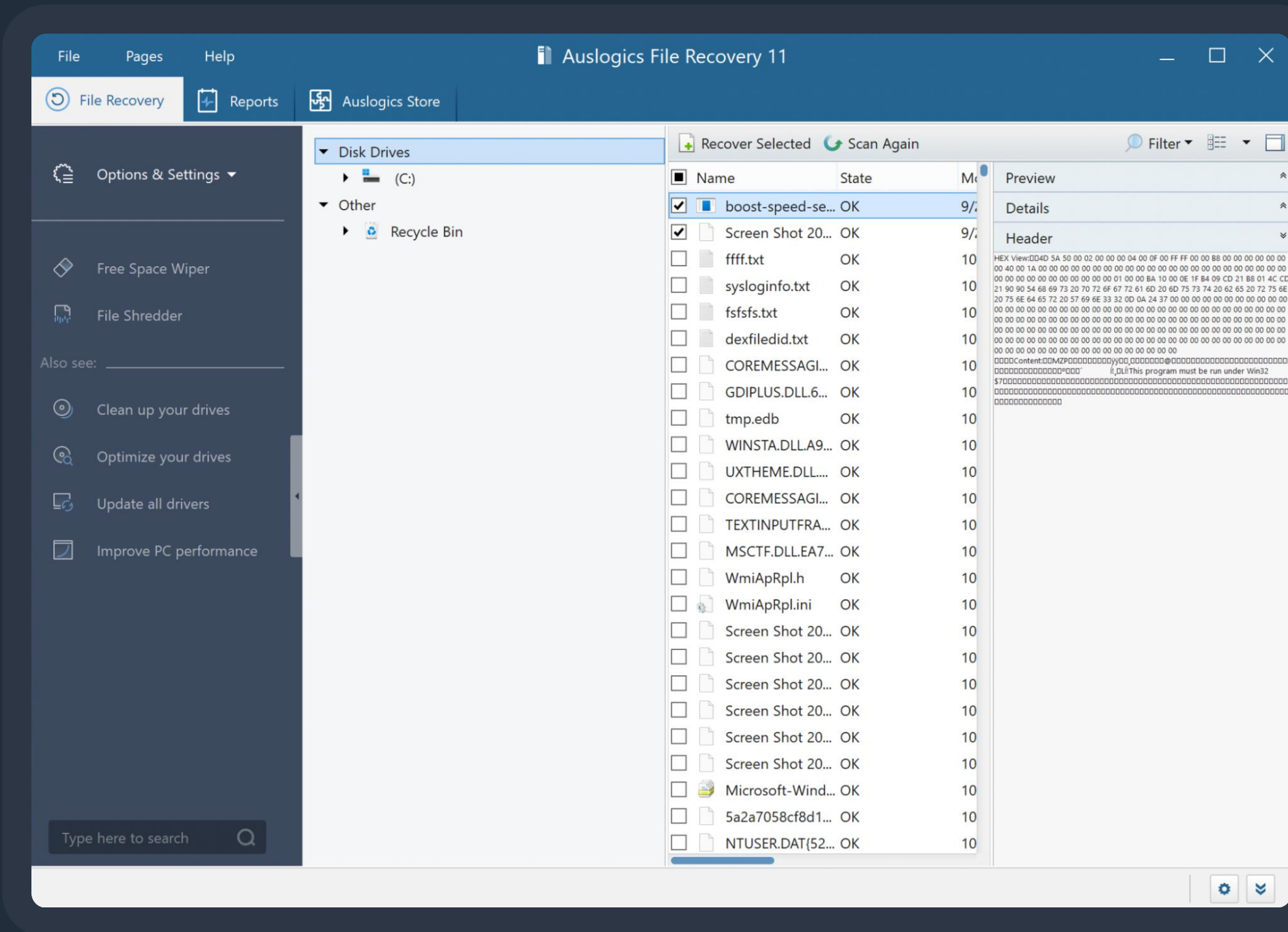
The item you see in the main section of the navigation panel are:

- **Options & Settings:** the main control for folder selection and other actions where you can select which operation to run and access your settings.
- **Free Space Wiper:** which allows you to permanently erase already deleted files so they cannot be restored later. This will not affect any undeleted files or folders.
- **File Shredder:** which lets you add files manually or drag them straight from Windows Explorer to shred them securely. This ensures that sensitive information within these files is destroyed and cannot be restored and accessed by anyone.

Using File Recovery

Search for Deleted Files

Learn how to search and recover deleted files.



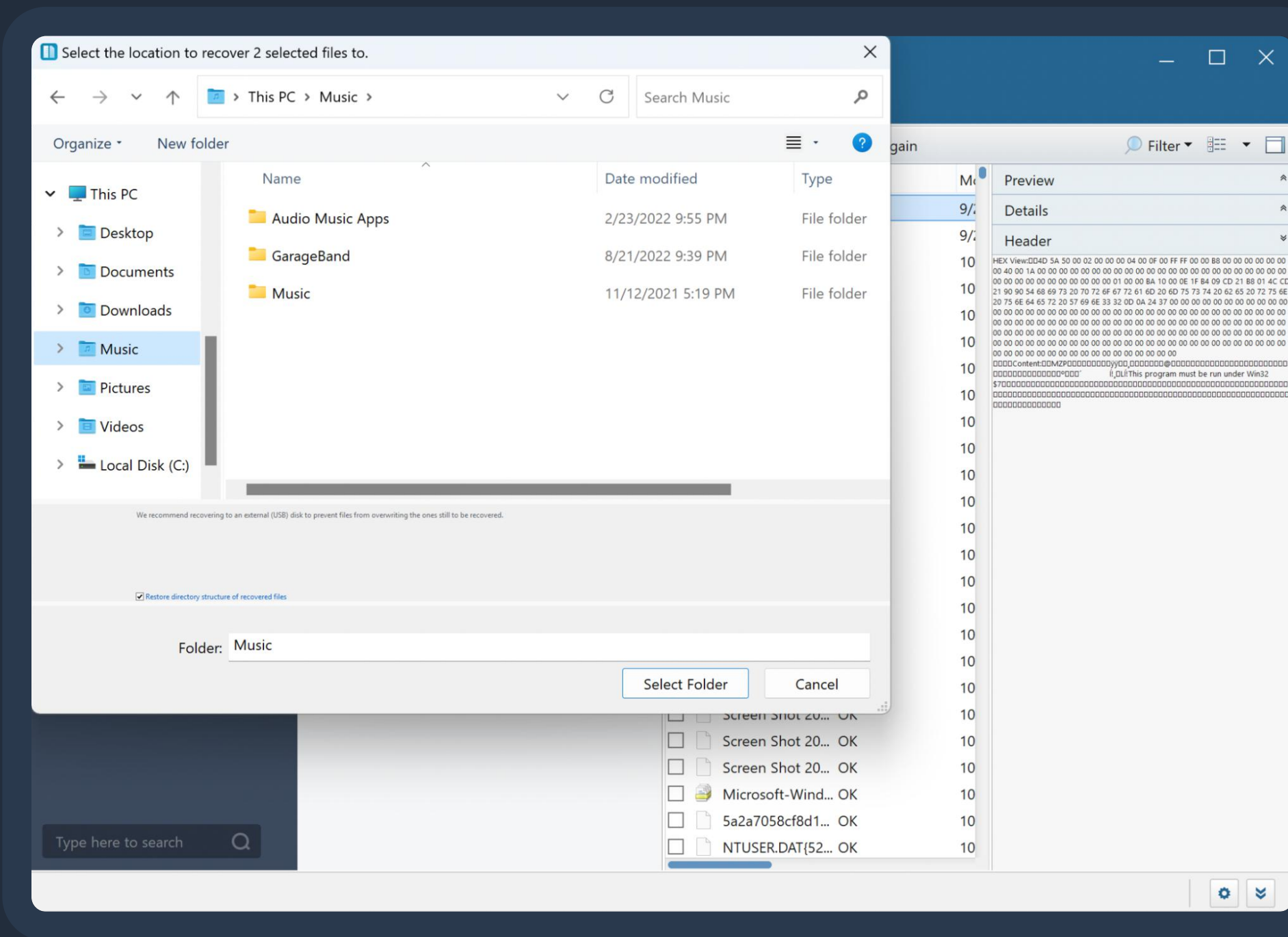
The first screen you see when you launch File Recovery displays two sections. On the left, you can **select which drives to search for deleted files**, or leave them all checked. On the right, you may specify **which types of files to search for**, or you can select the “Search all files” option

Then, you may click the Search button and the tool will search and find all deleted files that can be recovered. When the scan completes, you will see **a list of deleted files** with their names, current state and other details. For files such as images and documents, you can view a preview when you select the file. If you can’t find the file you are looking for in the list, you may try again by clicking the “Scan again” button above the list.

Using File Recovery

Recover files

Learn how to search and recover deleted files.

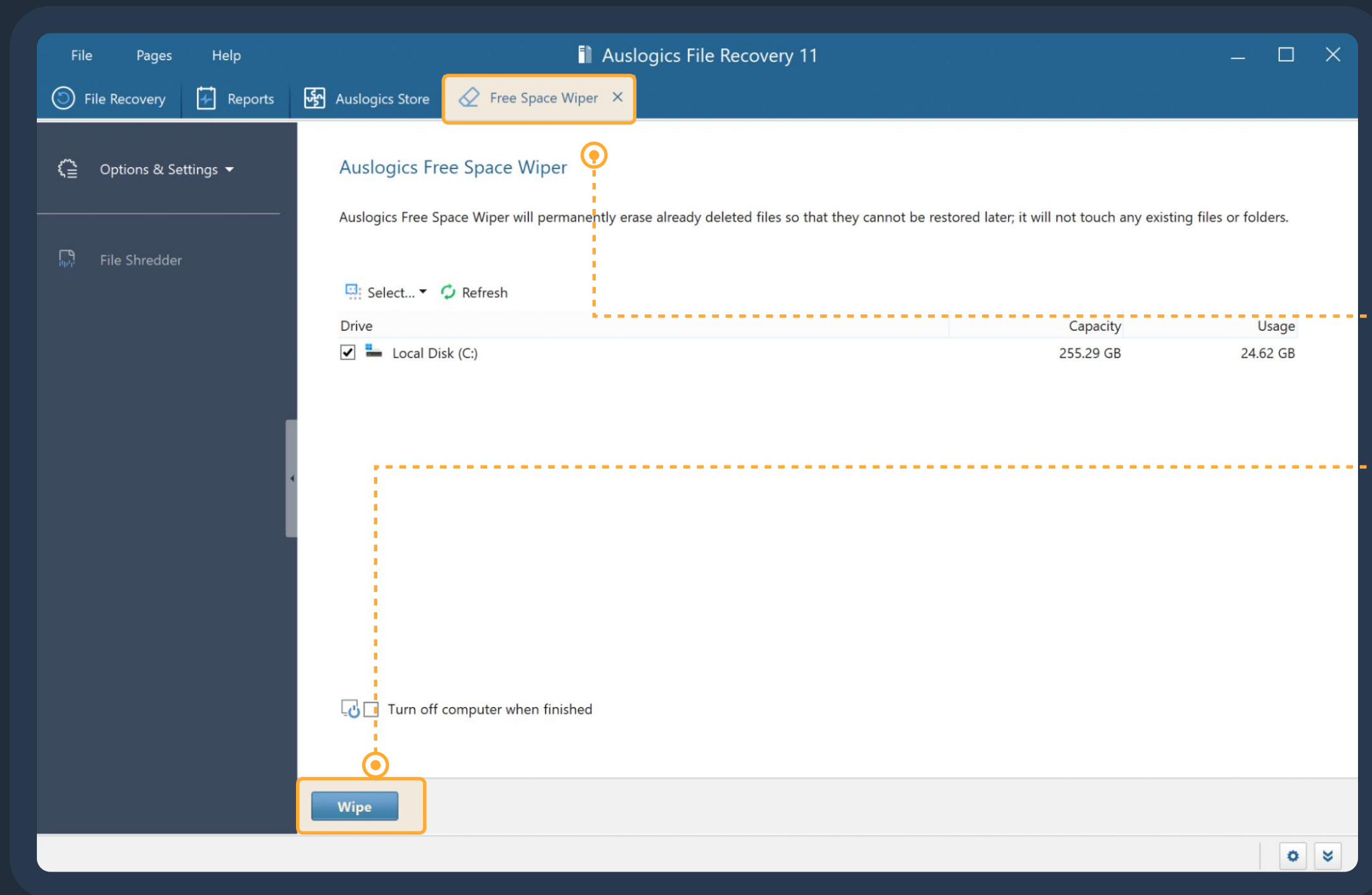


When you've found the file(s) you've been looking to restore, select them by checking the boxes next to the name of the file in the list. Then click the "Recover Selected" button which is above the list. Now you will see a window where you can select the location where you want to recover the file(s) to. Choose a location and click "Select Folder".

The tool will then recover the files to the selected location and you will see a report that tells you how many files have been recovered and where they were saved. You may find them in that folder and check them.

Using the **Free Space Wiper**

Permanently erase deleted files

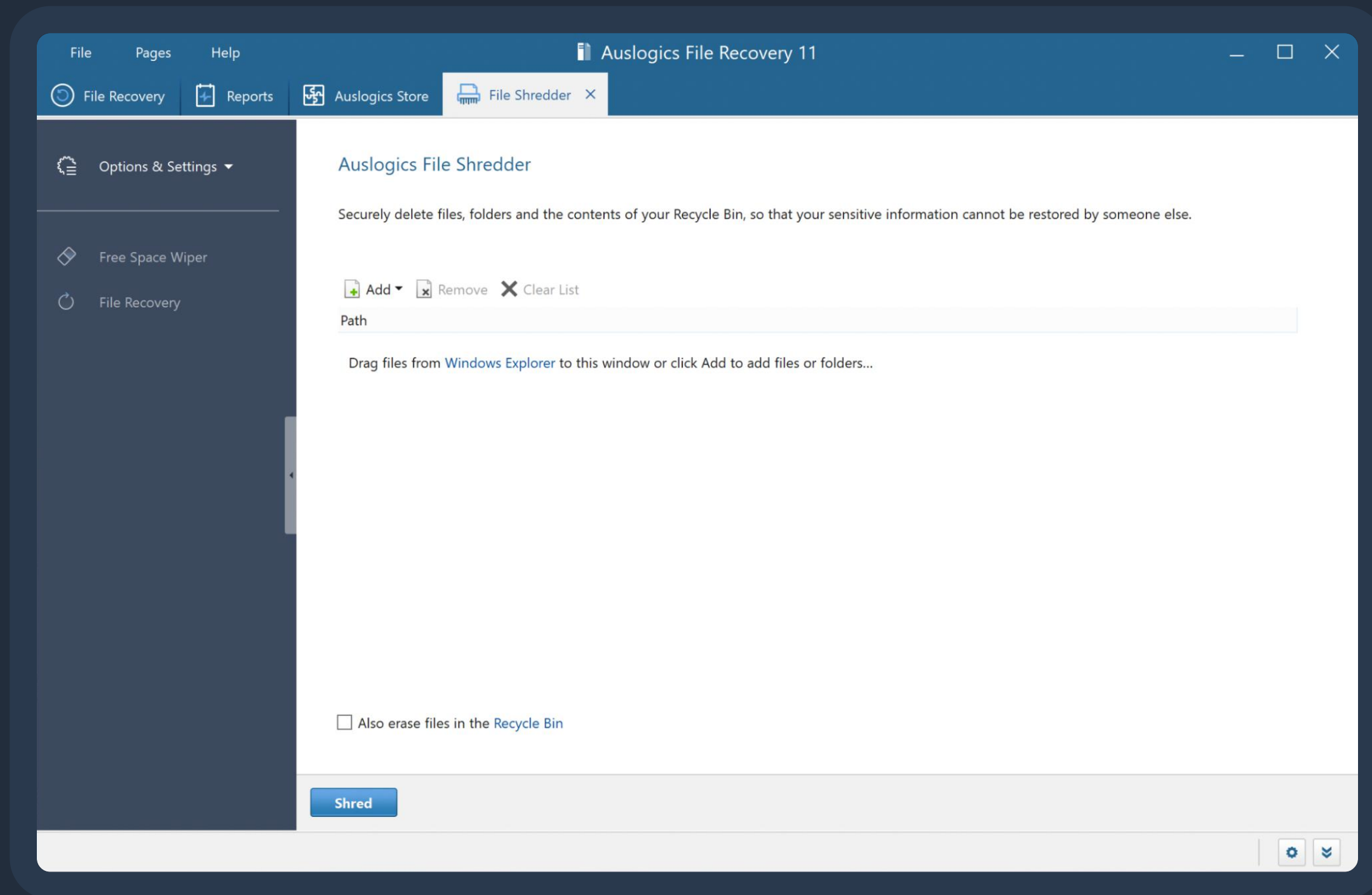


To access the Space Wiper, click on **“Free Space Wiper”** on the left-side navigation panel. This will open a new tab that will display your drives. Select the drives you want to wipe, and click **“Wipe”**.

Wiping your drives may take time and we advise you to restart your computer when it is finished.

Using the **File Shredder**

Securely delete files



To access the File Shredder, click on “File Shredder” on the left-side navigation panel. This will open a new tab where you can either select files or drag them from Windows Explorer. **Add the files you would like to shred and click the Shred button.**

Keep in mind that these files will be impossible to restore later.

Reports

Using the 'Reports' tab in File Recovery, you can review your current resource consumption and manage operation reports.

On the left side of the screen you can monitor current resource use statistics. This provides a great overview of how your system is handling all the tasks and applications that are currently running on it.

On the right side you see a table that lists reports created after every operation. You see the report name, the name of the tool that created it and the date when the operation ran.

If you see extremely high CPU, disk, network or memory loads, you will know that something might be wrong and will be able to take action.

File Recovery | Reports | Auslogics Store

Here you will find current system resource load charts and can view reports on all operations.

CPU (24%) Detailed view 100%

Disks (811 KBps) 25 MBps

Network (189 Bps) 50 KBps

Memory (71%) 100%

Tool Reports
You can view all reports on all operations, or just reports for a specific time period for a selected tool.

All

Name	Tool	Date
No reports		

Optimize Drivers | Create System Report | View Report | Delete Reports

Use the 'Delete' button to delete all reports ever created or just the reports listed above (the ones that match your search filter): you can select the option you want from the drop-down menu that opens when you click on the 'Delete' button arrow.

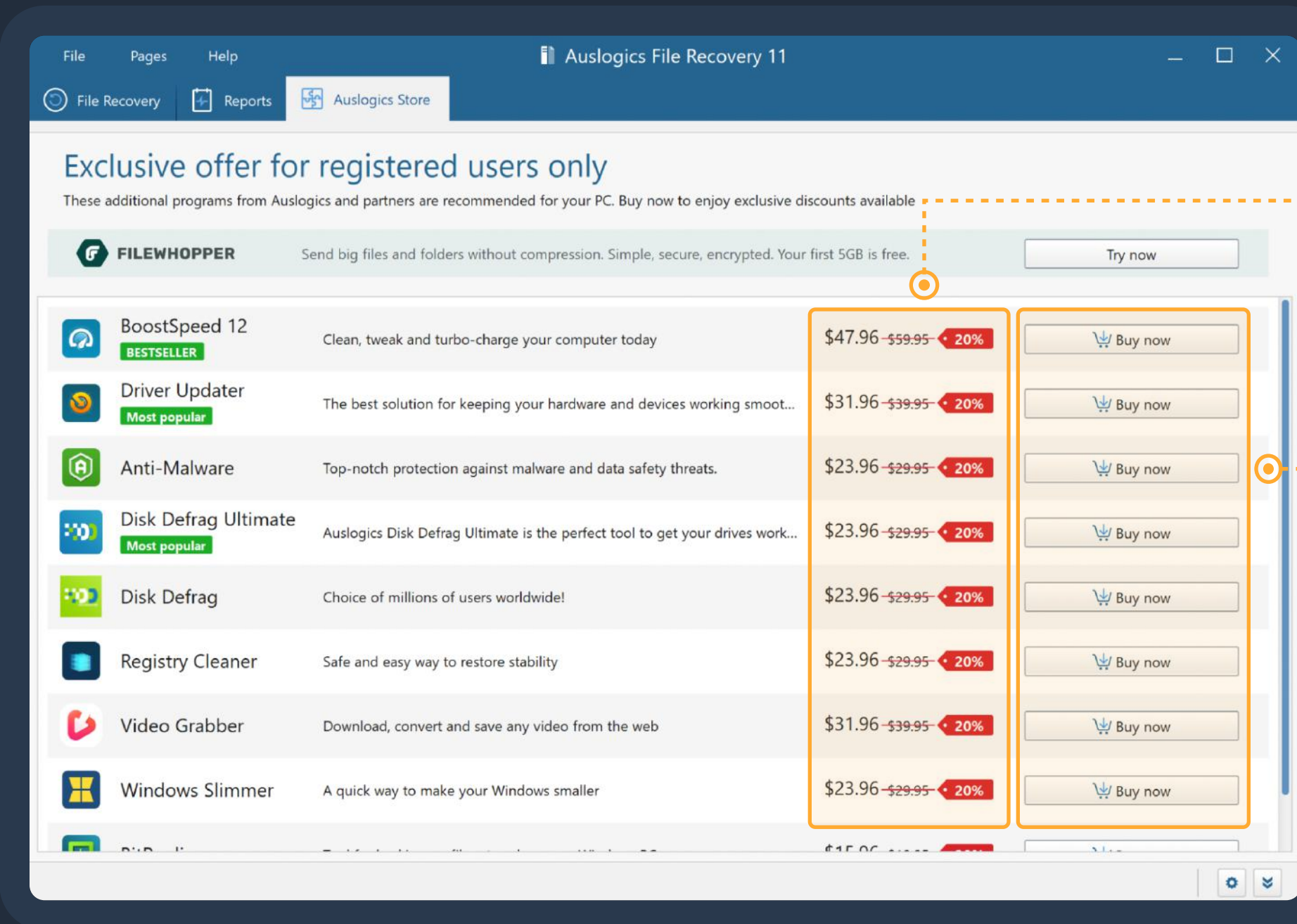
The filter above the table lets you search for specific reports by creation time. Click on a report in the table to select it, then click the 'View report' button below the table to view it.

Auslogics Store

The 'Auslogics Store' tab lists software programs made by Auslogics or its partners and recommended for your PC.

NOTE

These programs may offer a **trial** or a **free version**, but require a license to be purchased for full functionality. Installing or using any of them is completely optional.



This is also where you can see **special deals and discounts** available to you. You can click a button to go straight to an online cart and purchase software using your exclusive discount.

To install and try a recommended program, click the **'Buy now'** button next to it. This will open a window with a brief summary of what the software can do for your PC, and a link to download and install it.

Once a recommended program has been installed, it will show as installed and will have a **'Run'** button and a **'See status'** link next to it.

Program Settings

The Settings manager allows you to change the program's appearance and behavior.

Under **View**, select what to show or hide as well as the size of interface elements.

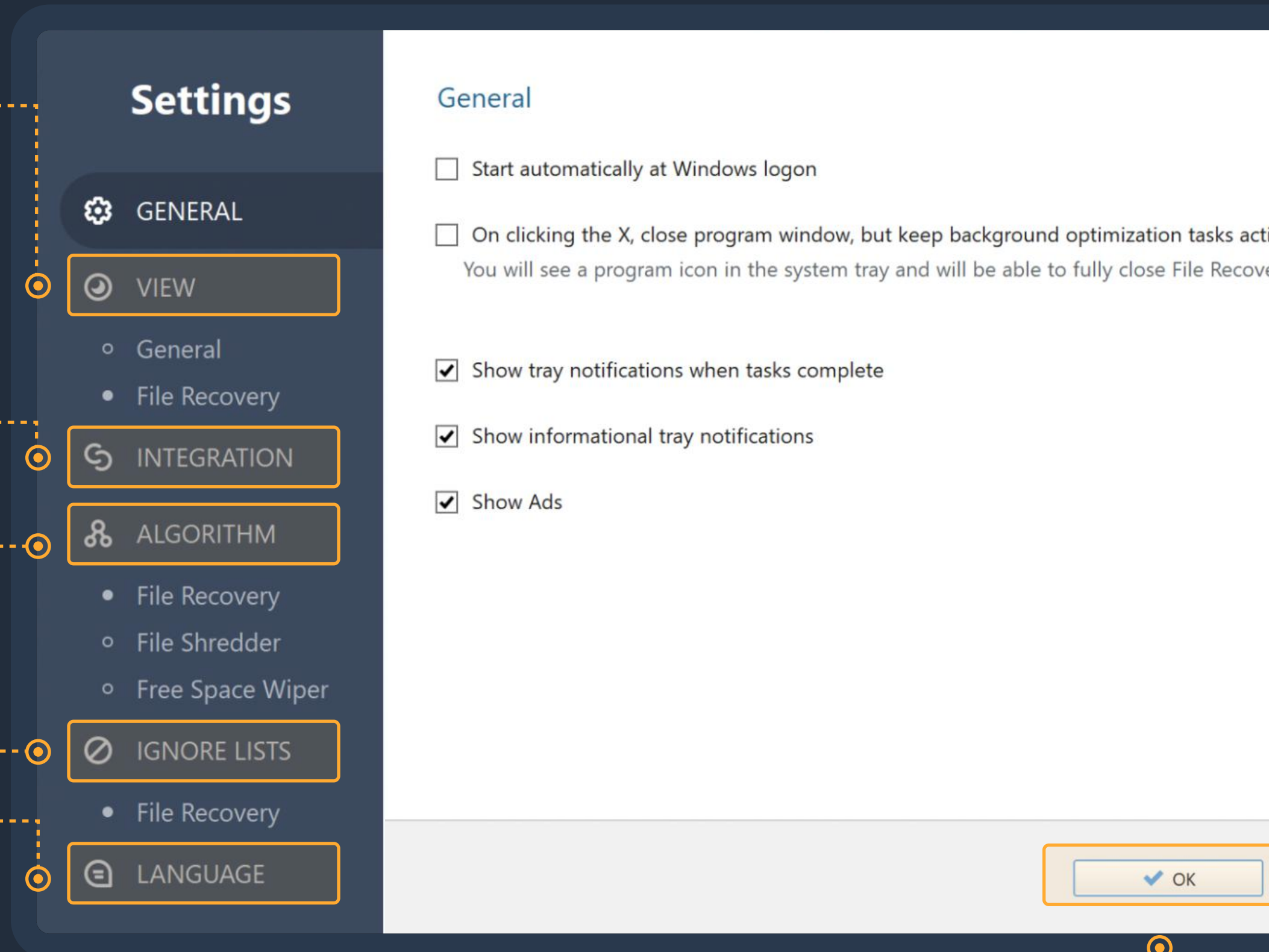
Under **Integration**, you can choose options from the software to integrate into the context menus of your system drives, Windows Explorer and Recycle Bin. This allows you to right-click on drives and files and recover, shred or wipe them directly from this menu without opening File Recovery.

Under **Algorithm**, customize the way the program recovers, wipes and shreds files.

Under **Ignore Lists**, you can select files and folders for the program to ignore during scans.

Under **Language**, you can choose the interface language for File Recovery.

When done, click **OK** to exit and apply your changes.

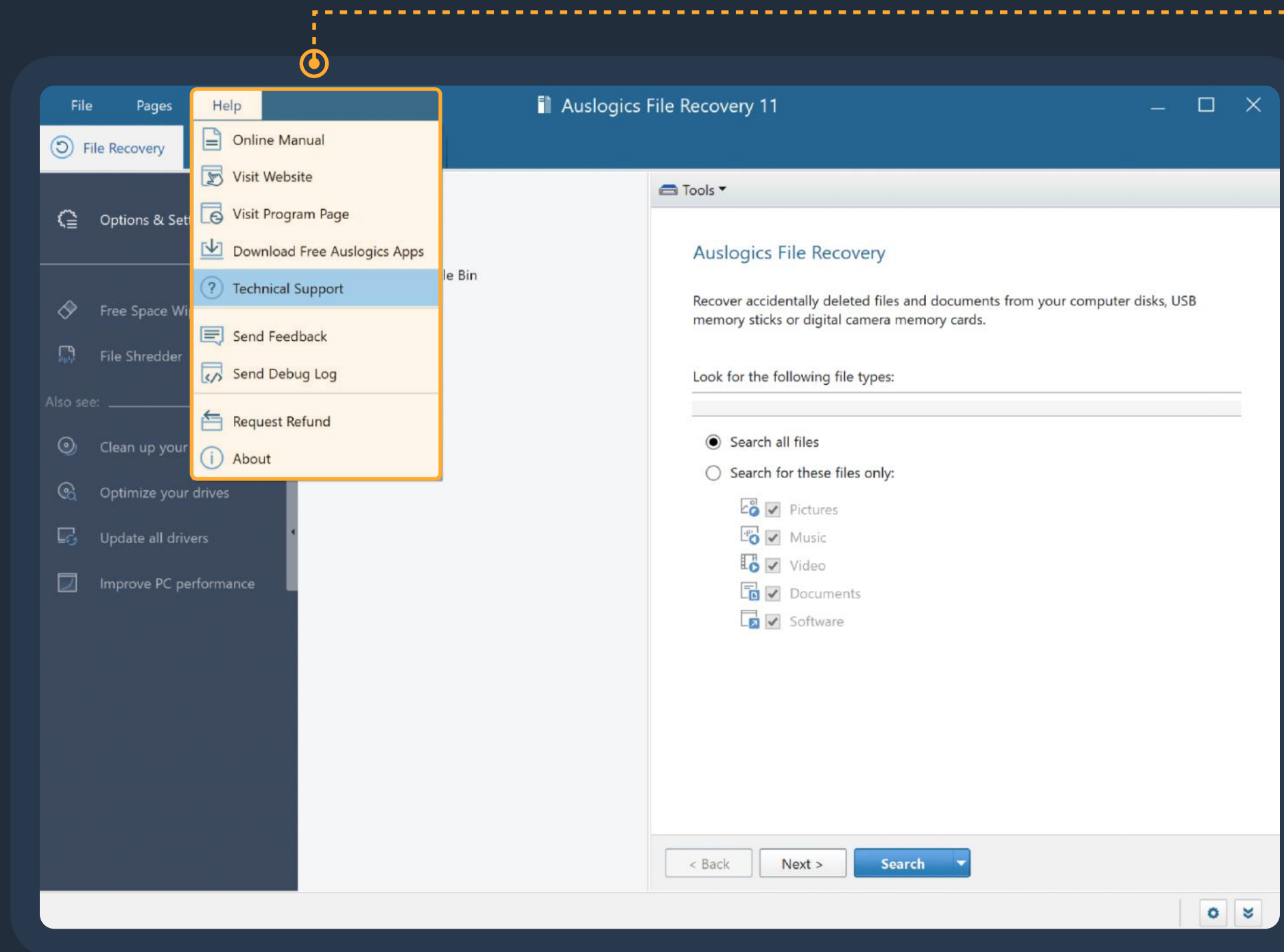


Contacting Auslogics

There are a number of ways to contact Auslogics, including several you can reach right from File Recovery's Help menu.

Click on 'Help' in the main menu, then select 'Technical Support' to go to the contact form on auslogics.com and send us a message.

If you experience technical issues with the program, you can click on 'Send Debug Log' to help our team get to the root of the problem.



Many of the questions you may have regarding Auslogics products have already been answered in the FAQ section on www.auslogics.com

The Support section on the Auslogics website also offers a way to retrieve a lost license key, request a refund, download product manuals and more.

Should you have any questions that are not answered on the website, don't hesitate to email our dedicated customer support team 24/7 at the following address: support@auslogics.com

Thank You
for Using Auslogics Software!

auslogics
software